

# MICROBORE MODULAR MGAH07 GEAR ADJUST BORING HEADS



Supplied with thro' coolant holes.  
For use on ABS® 63 compatible adaptors

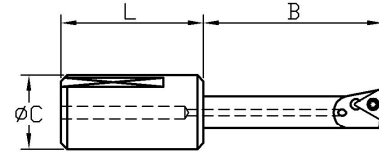
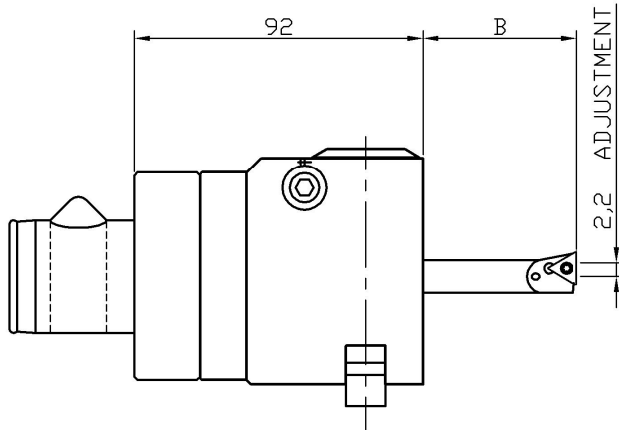


FIGURE 1  
TRIANGULAR INSERT

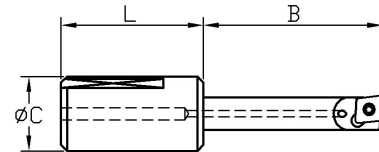


FIGURE 2  
RHOMBOIDAL INSERT

MGAH07 Details							
Microbore Part No.	Boring Range		B Boring Length	Ø C	Boring Tool	Insert Type	
	A					Fig.	Insert
	Min	Max					
MGAH07-ABS63	7.0	11.0	29.0	12.0	BTT12-07-29	1	TB__0601__
					BTS12-07-29	2	EP__0402__
	11.0	15.0	35.0	12.0	BTC12-11-35	2	CC__09T3__
					BTS12-11-35	2	EP__0602__
	15.0	19.0	64.0	12.0	BTC12-15-64	2	CC__09T3__
					BTS12-15-64	2	EP__0803__
	19.0	23.0	70.0	12.0	BTC12-19-70	2	CC__09T3__
					BTS12-19-70	2	EP__0803__
	23.0	27.0	70.0	12.0	BTC12-23-70	2	CC__09T3__
					BTS12-23-70	2	EP__0803__

NOTE: HEADS, ADAPTORS AND BORING TOOLS MUST BE ORDERED SEPARATELY.

REFER TO ADAPTOR RANGE CATALOGUE FOR ABS® 63 COMPATIBLE MODULAR ADAPTORS.

MICROBORE STRONGLY ADVISE THAT ANY RECONDITIONING WORK ON GEAR ADJUST BORING BARS OR BORING RINGS IS CARRIED OUT BY FACTORY TRAINED TECHNICIANS.

